

Technical Bulletin#: TB-LD005

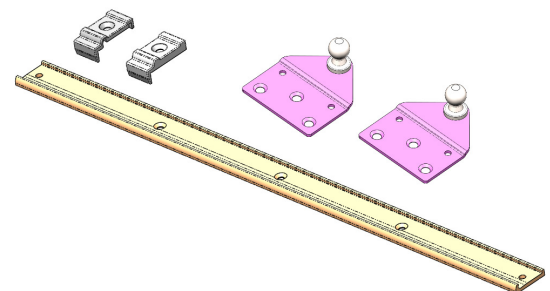
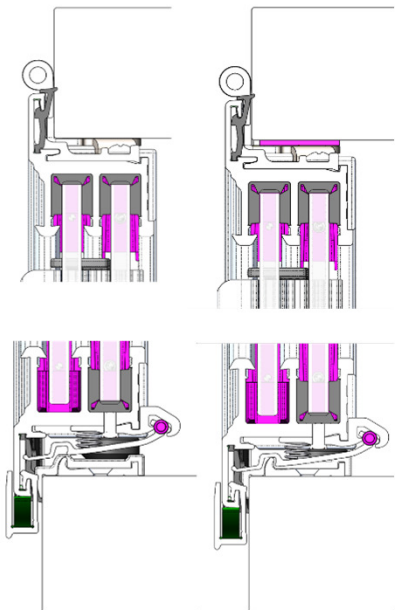
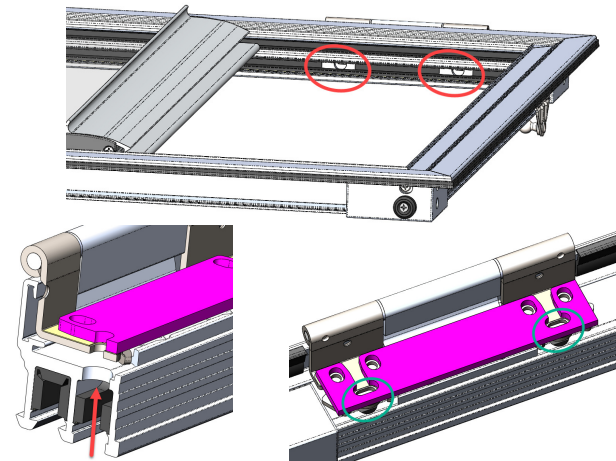
Revision Level: B

Title: Installing a Restocker Frame

Purpose: To provide guidelines for installing a GFTG frame

## FRAME FEATURES:

- The top outer hinges have access holes through the frame that allow the installer to locate the frame in the cabinet and secure the frame to the cabinet with four (4) #8 Pan Head screws into the top of the cabinet while the frame is resting in the opening.
- .060" thick shims come pre-installed onto the hinges with an adhesive that allows them to be removed.
- The frame is sized to work with the specified opening height with the .060 shims attached to the hinges.
- Shims on the hinges allow the installer to adjust the frame up or down to change the spacing between the striker (installed onto the frame) and the latch (pre-installed onto the frame).
- A Gas Spring application is done for each frame to work with an opening angle of between 75° and 95°. Brackets are already attached at the correct locations, and the appropriate gas springs are attached to the frame when delivered.
- The Striker, Striker End Caps, and Fixed Brackets are also included and attached to the Frame.



TB-LD005

Rev: B

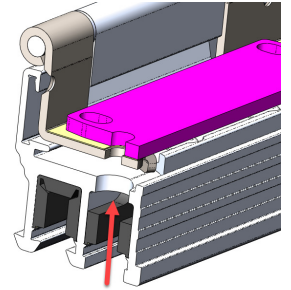
## Installing a Restocker Frame

### Step 1: Insert Frame into Cabinet

- Center Frame in opening

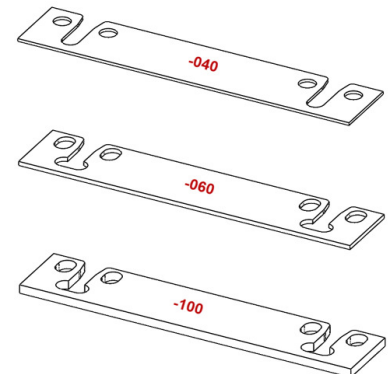
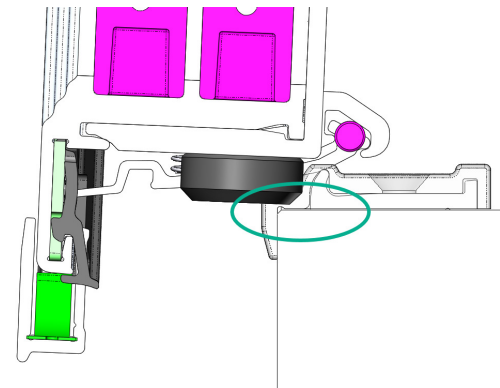
### Step 2: Secure Outer Hinges

- Open Sliders to access frame holes & hinge holes.
- Drill Pilot holes through access holes and hinges.
- Temporarily secure frame to cabinet with four (4) #8 Pan Head Screws on the outer hinges only.



### Step 3: Check Spacing at Bottom for Latch

- Two spacers on the bottom of the frame (one on each end) “pre-locate” the frame vertically.
- Once the outer hinges are secured with the first four screws, the frame can be rotated open.
- If the bottom spacing is correct, these Spacers will just clear the bottom of the cabinet. This indicates a satisfactory spacing for the latch.
- These Spacers can be removed, if desired.
- There is about a 1/8” range where the latch/striker work properly, so there is some flexibility to the spacing.
- On very wide frames, the spacing on the bottom may need to be slightly larger.
- If there is too much space here then shims need to be added to the hinges above to “lower the frame in the cabinet”. Austin has shims pre-stamped in .040”, .060” and .100” thicknesses.
- Once the spacing appears to be correct, install the remaining screws into the remaining holes of the hinges. Pilot holes are recommended.



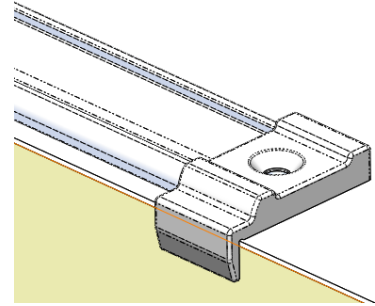
TB-LD005

Rev: B

## Installing a Restocker Frame

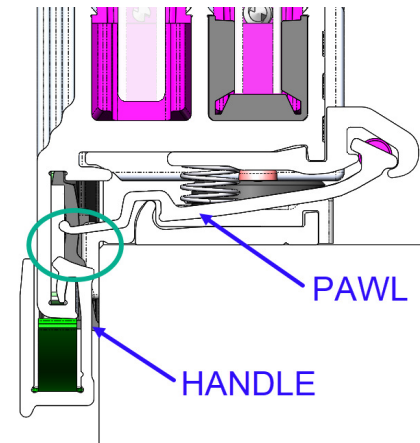
### Step 4: Install Striker

- The End Caps included fit onto the end of the striker.
- The front ends locate the striker offset so it matches to the position of the latch on the frame.
- Center the striker left-to-right and attach to cabinet with #6 Flat Head Screws
- Pilot holes are recommended.



### Step 5: Test Latch Function

- The Outer Handle is not connected to the Pawl, so the Pawl operates separately from the Handle.
- With a proper installation, when the Pawl is latched into the Striker, the end of the Pawl must not be in contact with the Handle as shown.
- To check this, you should be able to Push the Handle up a little bit (say at least 1mm) before you begin to push up on the Pawls.
- On larger latches, it normally takes force on each end of the Handle to “pop” the Pawl out of the Striker.



### Step 6: Install Gas Springs

- Attach the tube end of one Gas Spring to the Frame Bracket, and then attach the Fixed Bracket to the shaft end.
- Open the frame to the desired angle (75° and 95°) and locate the bracket as shown so its edge is about .25” behind the front edge of the cabinet (doesn't have to be exact).
- Repeat for the other side.
- Larger frames may need two people to reduce sag.
- Close and open the frame to make sure the gas springs work properly.

